

prsb phase shift oscillator adapter board.

1394

2020 ipro 1216v06d.

2020-12-16,18.

The board front, Fig. 1. ($41 \times 34 = 1394$) mm². Basically the idea was to provide an SMA connector to the !635-b1 OSHP phase shift oscillator (pso) boards. Like that I could plug it into other boards with SMAs.

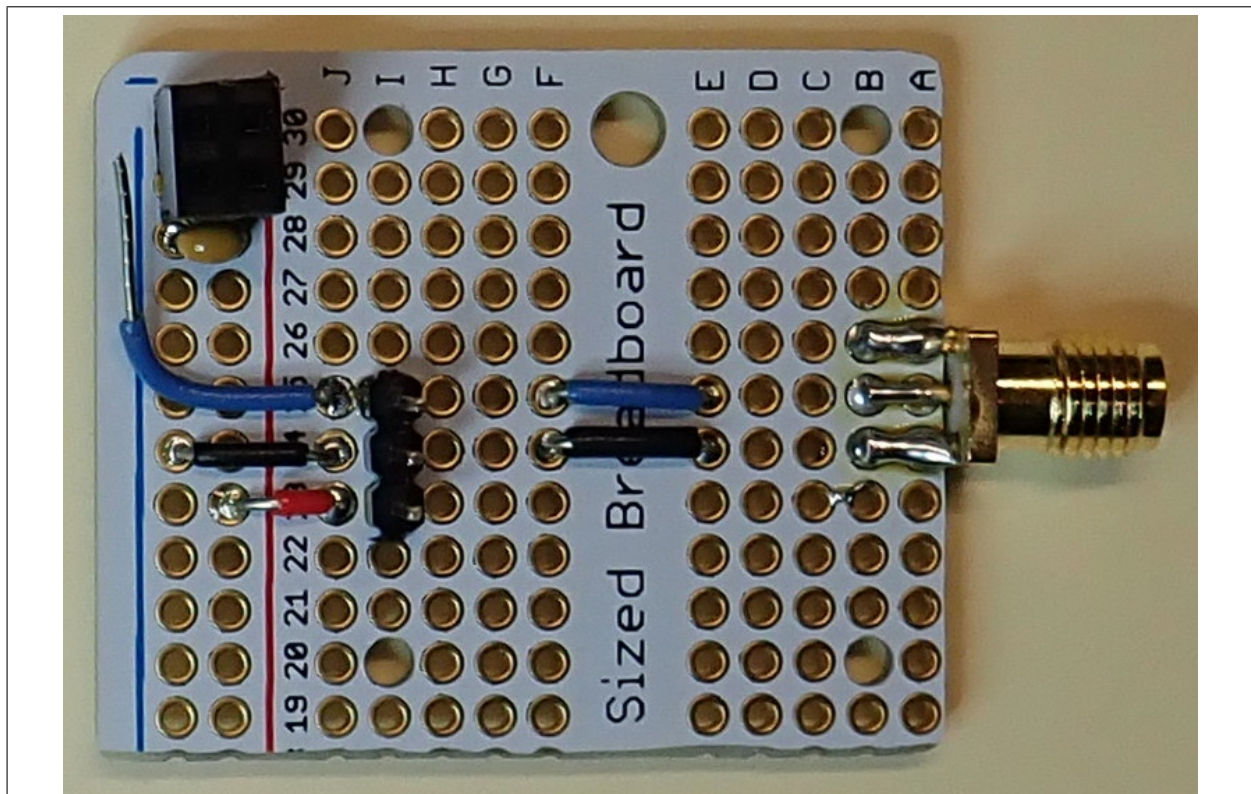


Figure 1: Front of board. There is a female 2x2 rect header so that I can plug in the power supply. Two of the headers go into the +V rail (red) and two into the GND rail (blue). There is also a blue wire with a open end close to the female header. Note the four holes at B20 B30 I20 I30. These are larger than regular pin holes. They have been drilled to accept the #2 screw standoffs from the !635-b1 boards.

1 Details.

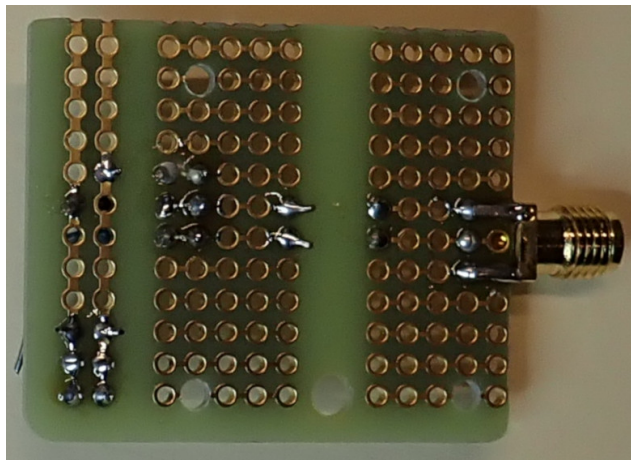


Figure 2: Underside of the board.

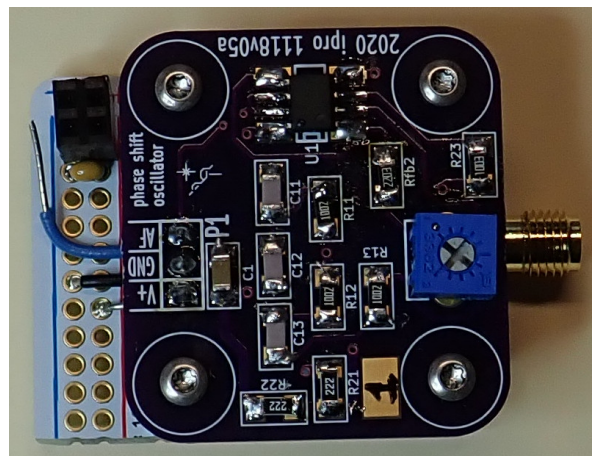


Figure 3: Boards together, top view. The OSHP board has a downward facing male header than fits into the lower board. The lower board supplies the voltage for the upper board. The upper board generates the AF which is then available at the SMA on the lower board. Note the OSHP board is incorrectly labeled “1118v05a” and should read “1122v05a”.

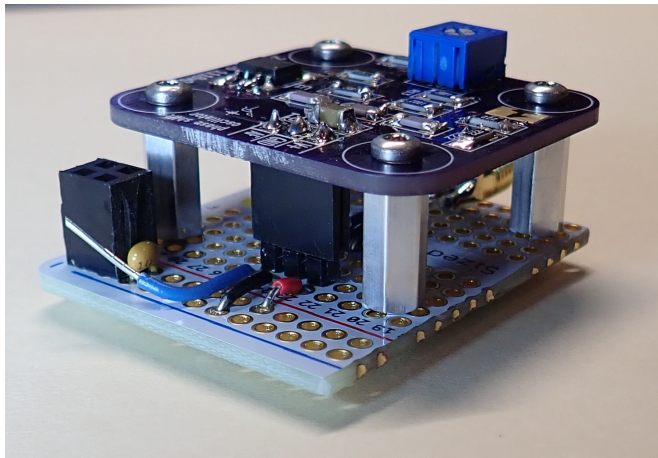


Figure 4: Boards together, perspective view.